

DOCTANZ - Output Specification

		DOCTANZ							
Mode		Touch	400	300	200	200S	150	100	80
Monopolar Cut	Pure Cut	400W/300 Ω	400W/300 Ω	300W/300 Ω	200W/300 Ω	200W/200 Ω	150W/200 Ω	100W/300 Ω	80W/300 Ω
	Blend I	250W/300 Ω	250W/300 Ω	230W/300 Ω	150W/300 Ω	150W/200 Ω	120W/200 Ω	100W/300 Ω	80W/300 Ω
	Blend II	200W/300 Ω	200W/300 Ω	180W/300 Ω	120W/300 Ω	120W/200 Ω	100W/200 Ω		
	Blend III	150W/300 Ω	150W/300 Ω	120W/300 Ω	100W/300 Ω				
Monopolar Coag	Contact	120W/300 Ω	120W/300 Ω	100W/300 Ω	100W/300 Ω	80W/200 Ω	80W/200 Ω	60W/300 Ω	50W/300 Ω
	Spray	100W/300 Ω	100W/300 Ω	80W/300 Ω	80W/300 Ω	80W/500 Ω	60W / 500 Ω		
Bipolar Cut	Cut Blend I	120W/300 Ω 100W/100 Ω	120W/200 Ω	120W/200 Ω	120W/200 Ω				
Bipolar Coag	Standard	100W/300 Ω	99W/100 Ω	80W/100 Ω	80W/100 Ω	80W/100 Ω	80W / 100 Ω	80W/100 Ω	70W/100 Ω
	Auto Start	100W/300 Ω							
	Forced	80W/300 Ω							
	Weight, Dimension	12.5Kg 390x410x160	13Kg 330X455X150		8Kg 330x330x150		6Kg 270X310X110		

* Bipolar Cut - In case of 400/300/200, this mode is only for Plus.

Electrosurgical Unit

DOCTANZ

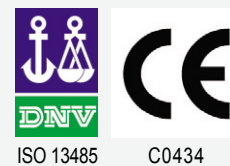
The Pride of Doctors & The Trust from Patients

Electrosurgical Unit - Standard Accessories

		DOCTANZ				
Mode		Touch	400/300/200	200S/150	100/80	ZERO 50
D1	Double foot switch	O	O	O	X	X
D2	Twin button handle	O	O	O	X	O
D3	Bipolar forcep	O	O	O	X	X
D4	Electrode	O	O	O	O	Optional
D5	Rubber patient plate &Cable	O	O	O	O	O
D6	Disposable return plate &Cable	O	O	O	Optional	X
D7	Bipolar cable	O	O	O	Optional	X
D8	Monopolar handle	O	O	O	O	X
D9	Single foot switch	O	O	X	O	X



Tel : +82 31 479 6990
 Fax : +82 31 479 6999
 E-mail : bizjeong@beful.co.kr
bizjeong@hotmail.com



The Complete Solutions for Electrical Surgeries with Various Types of Electrosurgical Units

DOCTANZ Touch



Electrosurgical Unit

DOCTANZ Touch

DOCTANZ 400/300/200 & 400/300/200 Plus

DOCTANZ 200S/150

DOCTANZ 100/80

The Complete Solutions for the Electrical Surgeries with Various Types of Models

1W Step Digital Control for All Models

So doctors can adjust output power by 1W step delicately.

For

General Surgery, Endoscopy, Dermatology, Gynecology, Vascular Surgery, Heart/Thoracic Surgery, ORL/ENT, T.U.R., Orthopedics, Oral Surgery, Urology, ...

Long Key(Speed Key) Functions

- By pushing Mode button for 2~3 sec., the power setting goes down the level '1' at one time.
- By pushing Up/Down Key for 2~3 sec., you can change the value very fast.

Mini Electrosurgical Unit

ZERO 50

Argon Plasma Coagulator

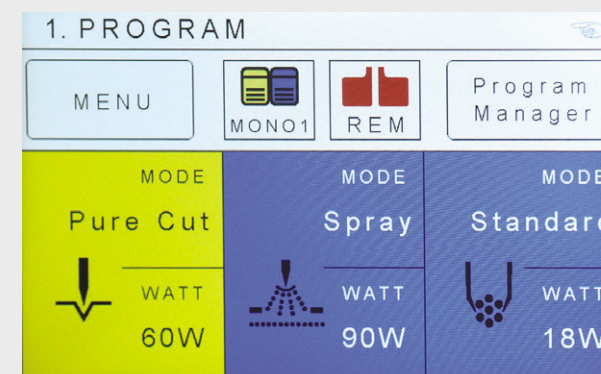
ARGON Z

The Best Efficiency, Stability, and Durability

DOCTANZ is developed by our plentiful experiences and know-how and tested under our strict QC System, so DOCTANZ will make users to operate it in the best convenient conditions and enjoy the stability and durability.

For User's convenient and accurate use

- Monopolar mode for easy urethral resection or laparoscope procedure
- Bipolar mode with large areas or wet tissues treatment with standard coagulations.
- Easy automatic coagulations with hand switch



User Setting

Around 100 users can set and memorize the operating conditions and modes

Faster selections by Key Button

Menu / Esc / Enter / Up&Down

REM(Return Electrode Monitoring) for Safety

For patient and user safety, in case of inappropriate contact size between a patient and the pad, it automatically blocks the high-frequency current.



Color Graphic User Interface

Wide 7" TFT LCD with clean and sharp image quality and the innovative new UI configuration

Touch Screen

Menu Selections

Operation Functions Selections

Display(mm)	152.4(h)X91.44(v)
Pixels	800X480,
Color	16.7M Colors

Memorization of the last operating condition, when turn on and off

Bipolar Mode with Easy Autohand Switch

Easy operation by switchable hand and foot switch control

Automatic control of the patient-plate connection

Other Specification	
Main Frequency	400KHz
Power Source	110V/220V, 50/60Hz
Electrical Class	Class I, Type CF

DOCTANZ means Doctor Hands. If you pronounce very fast 'Doctor Hands', you can do like [dactænz].

DOCTANZ 400/300/200 Plus



- 10 Users Setting Memory
- Bipolar Cut
- Automatic Detection of 50Hz or 60Hz

Other Specification	
Main Frequency	400KHz
Power Source	110V/220V, 50/60Hz
Electrical Class	Class I, Type CF

Automatic control of the patient-plate connection

Memorization of the last operating condition, when turn on and off

Bipolar Mode with Easy Autohand Switch

Easy operation by switchable hand and foot switch control

Hand Bipolar Mode(Auto Bipolar Mode) worked by only contacting forceps to patients

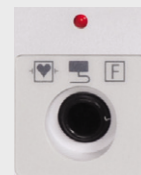
A built-in fuse on a power circuit to prevent an over current from flowing through the equipment

Alarm Sound and LED light, when the plate is disconnected from the equipment

In order to stop the alarm, press the button of Twin button handle or the pedal of Double foot switch

Different tone of sound with each LED light for each mode

REM(Return Electrode Monitoring) for Safety



For patient and user safety, in case of inappropriate contact size between a patient and the pad, it automatically blocks the high frequency current.

DOCTANZ 200S/150



Other Specification

Main Frequency	400KHz
Power Source	110V/220V, 50/60Hz
Electrical Class	Class I, Type CF

DOCTANZ 100/80



DOCTANZ 400/300/200

Other Specification	
Main Frequency	400KHz
Power Source	110V/220V, 50/60Hz
Electrical Class	Class I, Type CF



Other Specification	
Main Frequency	1.6MHz
Power Source	110V/220V, 50/60Hz
Electrical Class	Class I, Type CF

High Frequency

Smooth and delicate cut with 1.6MHz HF

ZERO 50

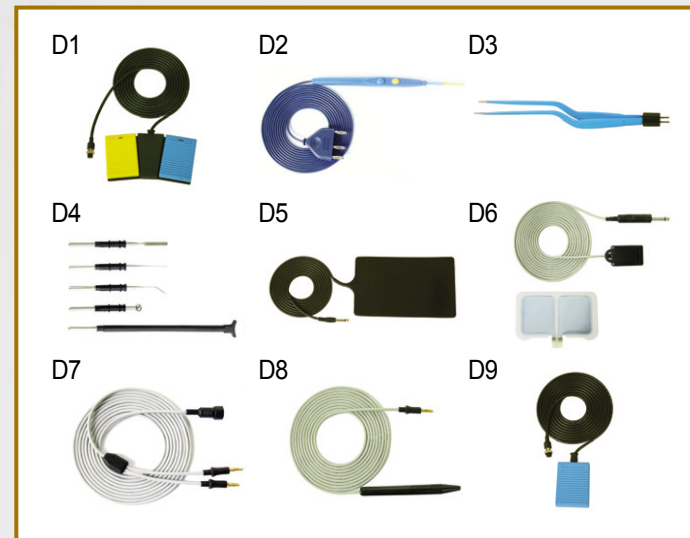
Other Specification	
Main Frequency	1.6MHz
Power Source	110V/220V, 50/60Hz
Weight, Dimension	2.6kg, 200X220X90
Electrical Class	Class I, Type BF
Mode	Output Power
Cut	50W / 300 Ω
Coagulation	40W / 300 Ω



DOCTANZ Accessories

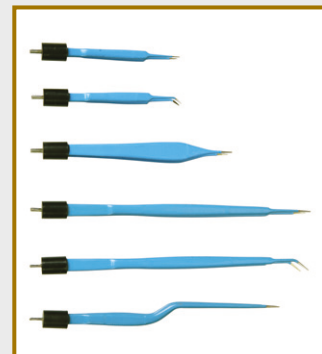
Standard Accessories

- D1 Double Foot Switch
- D2 Twin Button Handle
- D3 Bipolar Forceps(Bayonet 17.8cm)
- D4 Electrode Tips
- D5 Silicon Rubber Plate & Cable
- D6 Disposable Return Plate & Reusable Return Plate Cable
- D7 Bipolar Cable
- D8 Monopolar Handle
- D9 Single Foot Switch

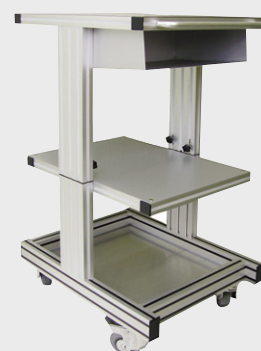


Optional Accessories

- F1 Straight 9.0cm 0.5 Tip
- F2 Angled 9.0cm 0.5 Tip
- F3 Straight 12.1cm 1.0 Tip
- F4 Straight 17.8cm 1.0 Tip
- F5 Angled 17.8cm 1.0 Tip
- F6 Bayonet 15.2cm 1.0 Tip



DT : Trolley



ARGON Z

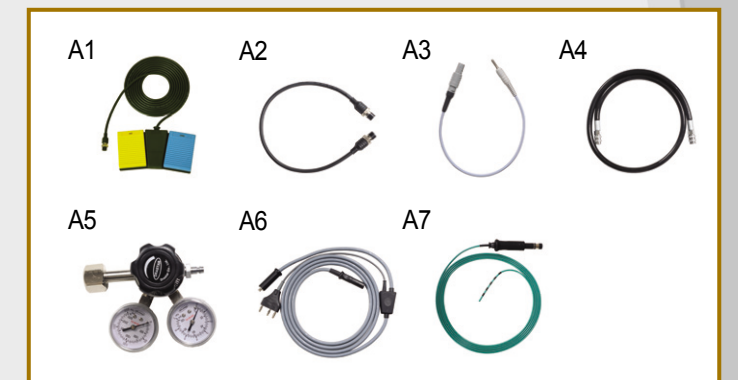


- Convenient LCD display on the front plate
- Resection and coagulation by Argon Twin Button Handle
- Foot Switch is available for Cutting and Coagulating
- 9 storages are available by using user storage function
- Even Coagulating by Contactless Coagulation
- Small Carbonization and almost none Sticking
- Fast hemostasis, when massive bleeding
- Easy and clean range of vision due to small smoke

Other Specification	
Power Source	110V/220V, 50/60Hz
Argon Gas Flow : CUT	0.11/min ~ 9.01min ± 20%
Argon Gas Flow : COAG.	0.11/min ~ 9.01min ± 20%
Electrical Class	Class I, Type CF
Weight, Dimension	7kg, 330X380X130

Standard Accessories

- A1 : Double Foot Switch
- A2 : Foot Switch Signal Cable
- A3 : Monopolar Cable
- A4 : Lure Lock Tube
- A5 : Regulator
- A6 : Argon Probe Cable
- A7 : Argon Probe



Optional Accessories

- AO1 : Cylinder
- AO2 : Argon Electrode Handle
- AO3 : Argon Cutting Electrode
- AO4 : Argon Needle Electrode
- AO5 : Argon Coagulation Electrode

